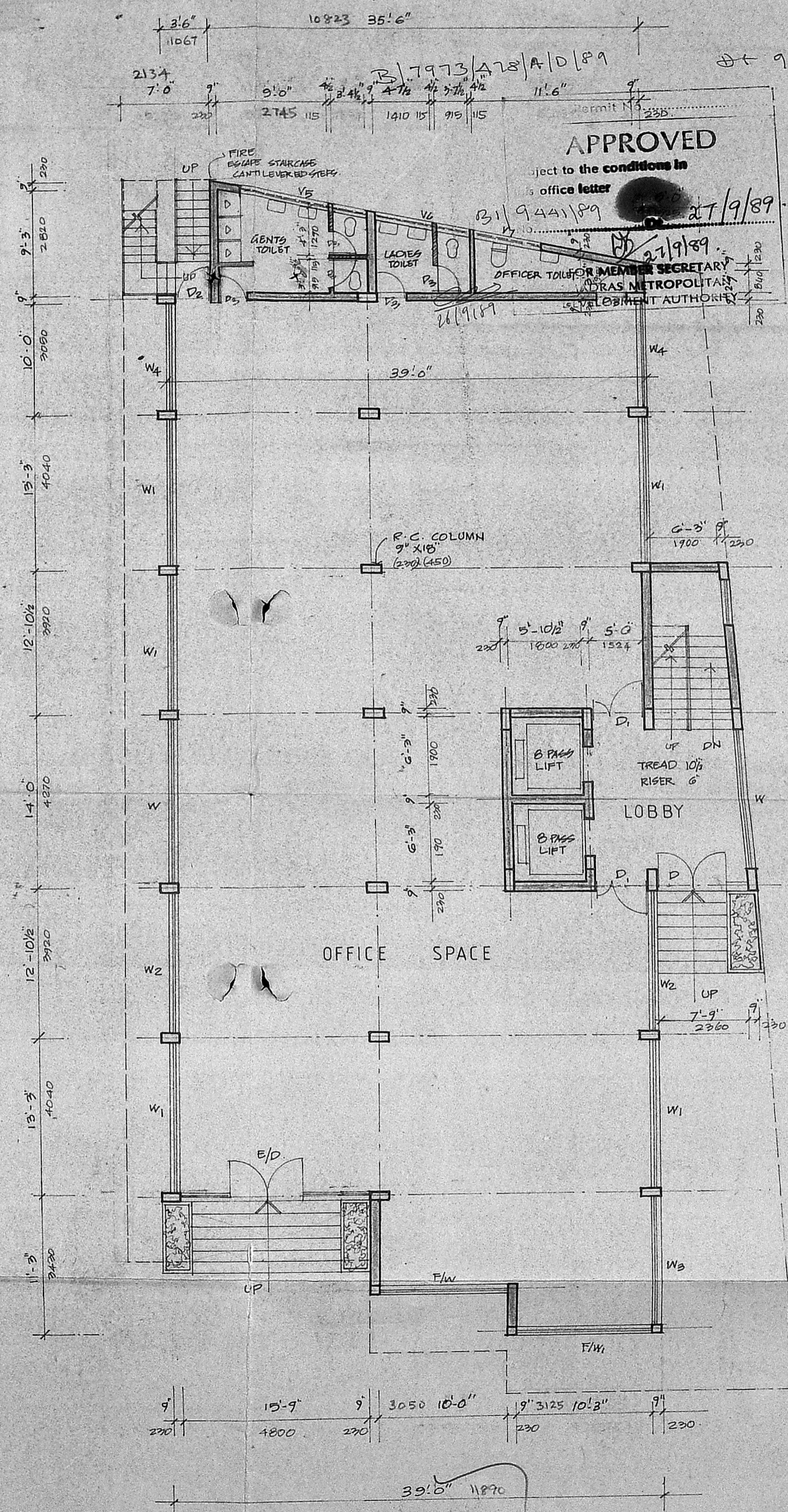


BASEMENT PLAN



GROUND FLOOR PLAN...

schedule of joinery

| TYPE | DESCRIPTION | SIZE |
|------------------|----------------------|-----------------|
| E/D | ENTRANCE GLAZED DOOR | 10'-9" x 7'-0" |
| D | T.W. GLAZED DOOR | 6'-0" x 7'-0" |
| D ₁ | T.W. PANELLED " | 6'-0" x 7'-0" |
| D ₂ | T.W. | 2'-6" x 7'-0" |
| D ₃ | T.W. | 2'-6" x 7'-0" |
| W | T.W. GLAZED WINDOW | 13'-9" x 4'-6" |
| W ₁ | T.W. | 38'-12" x 4'-6" |
| W ₂ | T.W. | 12'-0" x 4'-6" |
| W ₃ | VENTILATOR | 11'-6" x 4'-6" |
| W ₄ | VENTILATOR | 11'-6" x 4'-6" |
| W ₅ | VENTILATOR | 11'-6" x 4'-6" |
| W ₆ | VENTILATOR | 11'-6" x 4'-6" |
| W ₇ | VENTILATOR | 11'-6" x 4'-6" |
| W ₈ | VENTILATOR | 11'-6" x 4'-6" |
| W ₉ | VENTILATOR | 11'-6" x 4'-6" |
| W ₁₀ | VENTILATOR | 11'-6" x 4'-6" |
| W ₁₁ | VENTILATOR | 11'-6" x 4'-6" |
| W ₁₂ | VENTILATOR | 11'-6" x 4'-6" |
| W ₁₃ | VENTILATOR | 11'-6" x 4'-6" |
| W ₁₄ | VENTILATOR | 11'-6" x 4'-6" |
| W ₁₅ | VENTILATOR | 11'-6" x 4'-6" |
| W ₁₆ | VENTILATOR | 11'-6" x 4'-6" |
| W ₁₇ | VENTILATOR | 11'-6" x 4'-6" |
| W ₁₈ | VENTILATOR | 11'-6" x 4'-6" |
| W ₁₉ | VENTILATOR | 11'-6" x 4'-6" |
| W ₂₀ | VENTILATOR | 11'-6" x 4'-6" |
| W ₂₁ | VENTILATOR | 11'-6" x 4'-6" |
| W ₂₂ | VENTILATOR | 11'-6" x 4'-6" |
| W ₂₃ | VENTILATOR | 11'-6" x 4'-6" |
| W ₂₄ | VENTILATOR | 11'-6" x 4'-6" |
| W ₂₅ | VENTILATOR | 11'-6" x 4'-6" |
| W ₂₆ | VENTILATOR | 11'-6" x 4'-6" |
| W ₂₇ | VENTILATOR | 11'-6" x 4'-6" |
| W ₂₈ | VENTILATOR | 11'-6" x 4'-6" |
| W ₂₉ | VENTILATOR | 11'-6" x 4'-6" |
| W ₃₀ | VENTILATOR | 11'-6" x 4'-6" |
| W ₃₁ | VENTILATOR | 11'-6" x 4'-6" |
| W ₃₂ | VENTILATOR | 11'-6" x 4'-6" |
| W ₃₃ | VENTILATOR | 11'-6" x 4'-6" |
| W ₃₄ | VENTILATOR | 11'-6" x 4'-6" |
| W ₃₅ | VENTILATOR | 11'-6" x 4'-6" |
| W ₃₆ | VENTILATOR | 11'-6" x 4'-6" |
| W ₃₇ | VENTILATOR | 11'-6" x 4'-6" |
| W ₃₈ | VENTILATOR | 11'-6" x 4'-6" |
| W ₃₉ | VENTILATOR | 11'-6" x 4'-6" |
| W ₄₀ | VENTILATOR | 11'-6" x 4'-6" |
| W ₄₁ | VENTILATOR | 11'-6" x 4'-6" |
| W ₄₂ | VENTILATOR | 11'-6" x 4'-6" |
| W ₄₃ | VENTILATOR | 11'-6" x 4'-6" |
| W ₄₄ | VENTILATOR | 11'-6" x 4'-6" |
| W ₄₅ | VENTILATOR | 11'-6" x 4'-6" |
| W ₄₆ | VENTILATOR | 11'-6" x 4'-6" |
| W ₄₇ | VENTILATOR | 11'-6" x 4'-6" |
| W ₄₈ | VENTILATOR | 11'-6" x 4'-6" |
| W ₄₉ | VENTILATOR | 11'-6" x 4'-6" |
| W ₅₀ | VENTILATOR | 11'-6" x 4'-6" |
| W ₅₁ | VENTILATOR | 11'-6" x 4'-6" |
| W ₅₂ | VENTILATOR | 11'-6" x 4'-6" |
| W ₅₃ | VENTILATOR | 11'-6" x 4'-6" |
| W ₅₄ | VENTILATOR | 11'-6" x 4'-6" |
| W ₅₅ | VENTILATOR | 11'-6" x 4'-6" |
| W ₅₆ | VENTILATOR | 11'-6" x 4'-6" |
| W ₅₇ | VENTILATOR | 11'-6" x 4'-6" |
| W ₅₈ | VENTILATOR | 11'-6" x 4'-6" |
| W ₅₉ | VENTILATOR | 11'-6" x 4'-6" |
| W ₆₀ | VENTILATOR | 11'-6" x 4'-6" |
| W ₆₁ | VENTILATOR | 11'-6" x 4'-6" |
| W ₆₂ | VENTILATOR | 11'-6" x 4'-6" |
| W ₆₃ | VENTILATOR | 11'-6" x 4'-6" |
| W ₆₄ | VENTILATOR | 11'-6" x 4'-6" |
| W ₆₅ | VENTILATOR | 11'-6" x 4'-6" |
| W ₆₆ | VENTILATOR | 11'-6" x 4'-6" |
| W ₆₇ | VENTILATOR | 11'-6" x 4'-6" |
| W ₆₈ | VENTILATOR | 11'-6" x 4'-6" |
| W ₆₉ | VENTILATOR | 11'-6" x 4'-6" |
| W ₇₀ | VENTILATOR | 11'-6" x 4'-6" |
| W ₇₁ | VENTILATOR | 11'-6" x 4'-6" |
| W ₇₂ | VENTILATOR | 11'-6" x 4'-6" |
| W ₇₃ | VENTILATOR | 11'-6" x 4'-6" |
| W ₇₄ | VENTILATOR | 11'-6" x 4'-6" |
| W ₇₅ | VENTILATOR | 11'-6" x 4'-6" |
| W ₇₆ | VENTILATOR | 11'-6" x 4'-6" |
| W ₇₇ | VENTILATOR | 11'-6" x 4'-6" |
| W ₇₈ | VENTILATOR | 11'-6" x 4'-6" |
| W ₇₉ | VENTILATOR | 11'-6" x 4'-6" |
| W ₈₀ | VENTILATOR | 11'-6" x 4'-6" |
| W ₈₁ | VENTILATOR | 11'-6" x 4'-6" |
| W ₈₂ | VENTILATOR | 11'-6" x 4'-6" |
| W ₈₃ | VENTILATOR | 11'-6" x 4'-6" |
| W ₈₄ | VENTILATOR | 11'-6" x 4'-6" |
| W ₈₅ | VENTILATOR | 11'-6" x 4'-6" |
| W ₈₆ | VENTILATOR | 11'-6" x 4'-6" |
| W ₈₇ | VENTILATOR | 11'-6" x 4'-6" |
| W ₈₈ | VENTILATOR | 11'-6" x 4'-6" |
| W ₈₉ | VENTILATOR | 11'-6" x 4'-6" |
| W ₉₀ | VENTILATOR | 11'-6" x 4'-6" |
| W ₉₁ | VENTILATOR | 11'-6" x 4'-6" |
| W ₉₂ | VENTILATOR | 11'-6" x 4'-6" |
| W ₉₃ | VENTILATOR | 11'-6" x 4'-6" |
| W ₉₄ | VENTILATOR | 11'-6" x 4'-6" |
| W ₉₅ | VENTILATOR | 11'-6" x 4'-6" |
| W ₉₆ | VENTILATOR | 11'-6" x 4'-6" |
| W ₉₇ | VENTILATOR | 11'-6" x 4'-6" |
| W ₉₈ | VENTILATOR | 11'-6" x 4'-6" |
| W ₉₉ | VENTILATOR | 11'-6" x 4'-6" |
| W ₁₀₀ | VENTILATOR | 11'-6" x 4'-6" |

| AREA | STATEMENT |
|--------------|-----------------|
| PLOT AREA | 18.00 FT 920.44 |
| BASEMENT | 373.30 |
| GROUND FLOOR | 345.35 |
| FIRST FLOOR | 452.04 |
| SECOND | 452.04 |
| THIRD | 452.04 |
| TOTAL AREA | 1867.30 |

| | |
|---------------|--------|
| FSI ALLOWED | 200 |
| FSI PROVIDED | 132 |
| PLOT COVERAGE | 35.52% |
| CAR PARKING | 15 NOS |

REVISED ON 5.7.89
OWNER SIGNATURE: *D. Srinivasulu*

PROPOSED COLOURED

PROPOSED OFFICE COMPLEX
AT PLOT no 5 HADDOWS ROAD
R.s no. 106/8 and 17 Block no. 19
DIVISION no. 106, NUNGAMBAKKAM
MADRAS 600 034

BASEMENT & GROUND FLOOR PLAN
scale : 1" = 8.0' 1:100
date : 6.4.89
drawn : M. K. M.
job no : drg no. 1

ARCHITECTS & ENGINEERS
M. K. M.
ALIAF AND ASSOCIATES
75, 3rd EAST STREET
THIRUVANNIYUR MADRAS-600 041